

SC-550W TRUCK ANTENNA

Ultra-wideband exterior antenna designed for trucks, big rigs, RVs and fleet vehicles



Stay connected anywhere with SureCall's heavy-duty OTR truck antenna that is equipped with a strong base and mirror mount that can hold up in the harshest of conditions.

The high-performance SC-550W antenna provides better interior coverage and connectivity for multiple simultaneous users on all 5G and 4G LTE cellular devices, including hotspots, when paired with the Fusion2Go 3.0 or another in-vehicle signal booster kit.

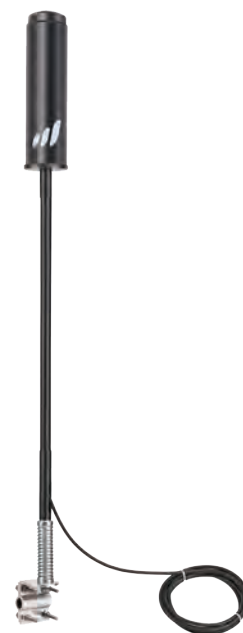
- » Durable weather-proof components are protected from water, dust and road grime
- » 2-clamp mounting bracket and heavy-duty hardware with thread-lock glue withstands vibrations
- » Complete mounting kit for mirror installation with optional mast extension for 16" and 32" height options

FEATURES

- Designed for use with large trucks, big rigs, RVs and fleet vehicles
- Omni-directional antenna captures cell signal from all directions
- 3.5 dBi Gain
- Ultra wideband (617 - 2700 MHz)
- FME-Female connector

TECHNICAL SPECIFICATIONS

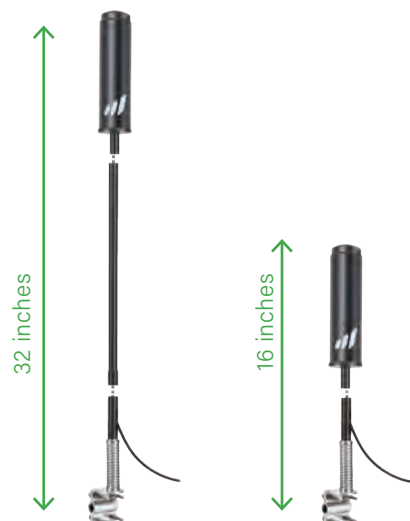
Frequency Range	617-697 / 698-960 / 1710-2700 MHz
Beamwidth	H:360° E:60° / H:360° E:55° / H:360° E:40
VSWR	<2/2/2
Gain	3.5 dBi
Impedance	50 Ω
Polarization	Vertical
Radiation	Omni-directional
Direction	Non-circularity $\pm 2/\pm 2/\pm 2.5$ dB
Max Power	50W
Connector	FME-Female
Color	Black
Operating Humidity	5% ~ 95%
Operating Temp	-22°F to +176°F
Cable Length	10 ft (integrated), 5 ft extension (optional)
Antenna Height	Total height is 32 in with pole extension and 16 in without extension



INSTALLATION

For best results, the antenna should be mounted on a compatible surface, such as the mirror, in an upright position with the antenna pointing toward the sky (perpendicular to the ground).

Built-in ground plane allows for use on any surface – metal, fiberglass, wood, etc.



SC-550W HIGH PERFORMANCE TRUCK ANTENNA

INSTALLATION

ASSEMBLE ANTENNA

1. Choose the best mounting location

Choose a location where a rail or mirror may be utilized to secure the mounting bracket (3/8 x 24 thread mount) while also meeting the following requirements:

The chosen location should (a) allow the full length of the antenna to extend above the main cab and (b) provide a minimum distance of 12 inches from metal or other radiating elements.

Mast Extension:

If the chosen location is near or on the roof of the vehicle, the mast extension may not be needed. Verify the height and clearance requirements have been met before proceeding.

2. Route cable

Once you have determined the mounting location, assemble the antenna parts by routing the cable through the mast extension (if used) and through cable exit adapter.

3. Secure the antenna to the mast

Apply a small amount of the provided glue to the threads joining the antenna to the mast extension (if used) then to cable exit adapter.

Be sure the pieces align appropriately before moving on as the connection will be permanent.

4. Connect the spring base

Join the spring base to the bottom of the cable exit adapter. Making sure to align pieces properly, apply glue to threads and join securely together.

INSTALL MOUNTING BRACKET

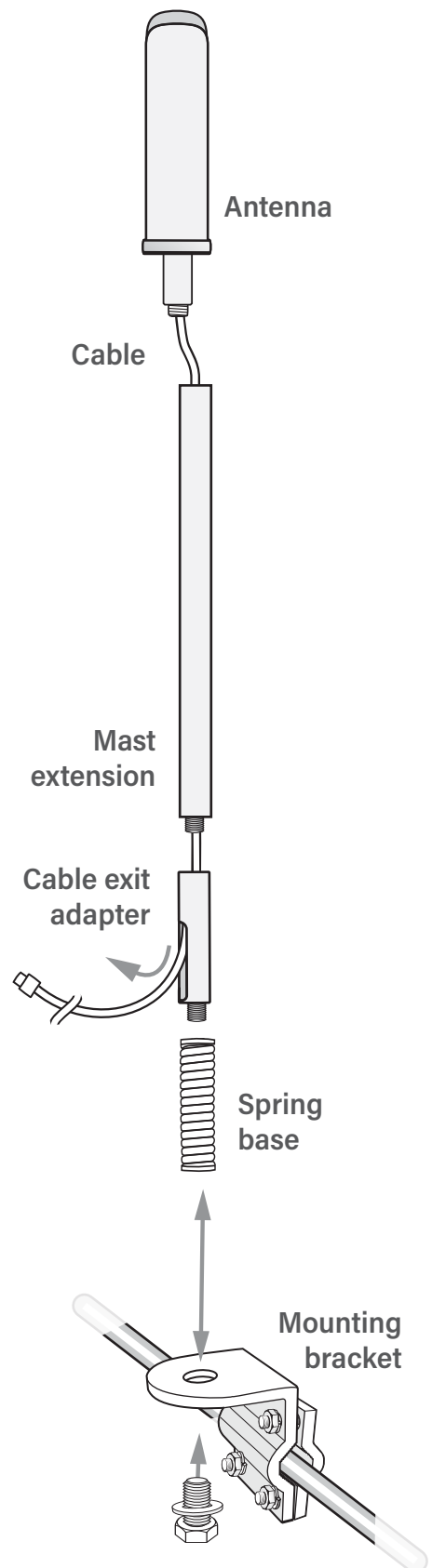
Secure bracket to vehicle rail as shown using provided hardware. Secure all four bolts in place and secure with a wrench.

SECURE ANTENNA TO THE MOUNTING BRACKET

Remove bolt from the end of the spring base of the antenna. Add glue to the threads then secure the antenna to the bracket by reconnecting the bolt to the spring base through the bracket opening as shown.

Route cable from outside to the inside of the cabin where your compatible booster (available separately) is located.

If additional cable length is needed, an optional 5 ft extension cable has been provided.



FOR QUESTIONS AND SUPPORT